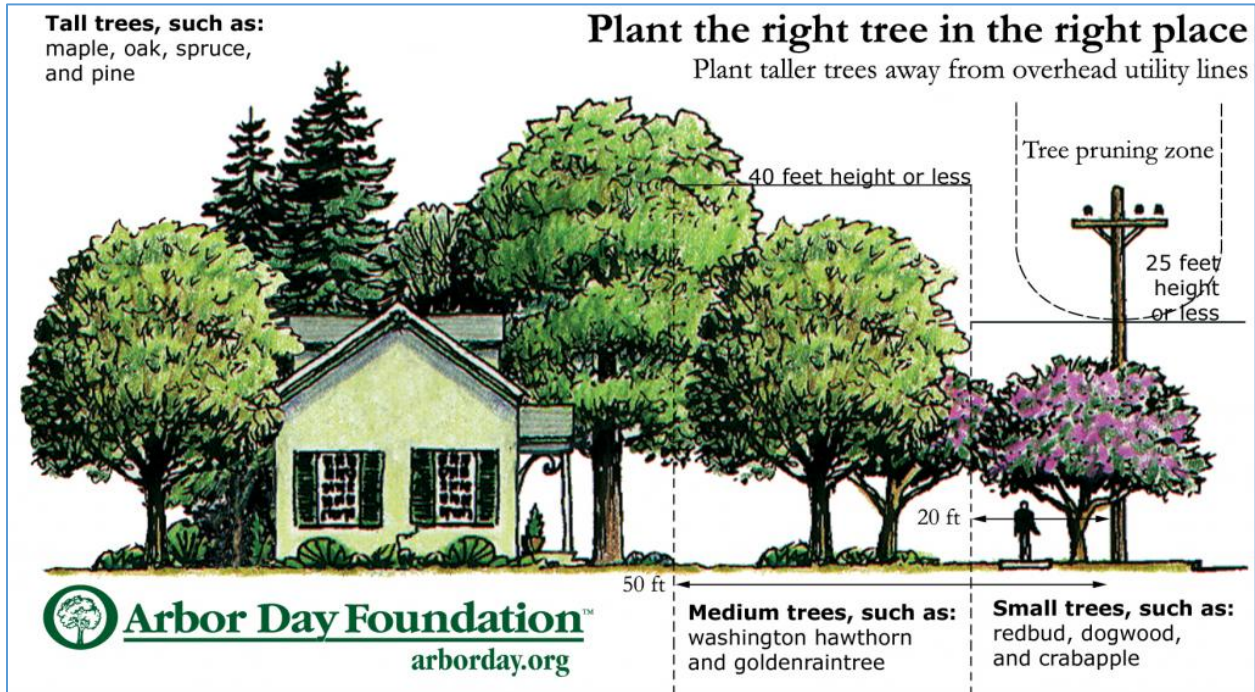


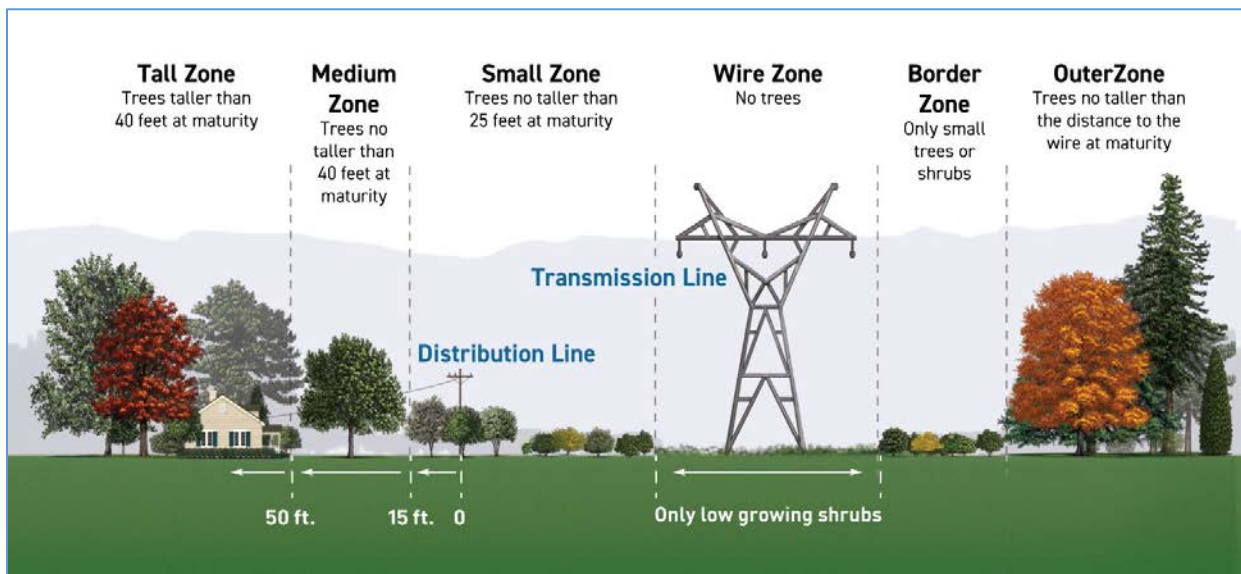
Tree Planting Selection Guide: for Under/Near Overhead Utilities

1. Determine available airspace:

Consider height and width of airspace. Look for conflicts for the mature tree. Choose a location and a tree species that would have minimal conflict. Trees species have a variety of sizes and shapes! What is the available airspace? What is the desired space to fill? What do you want to screen? What do you want to avoid blocking? Are there utility lines? Walking paths? Driveways? Streets?



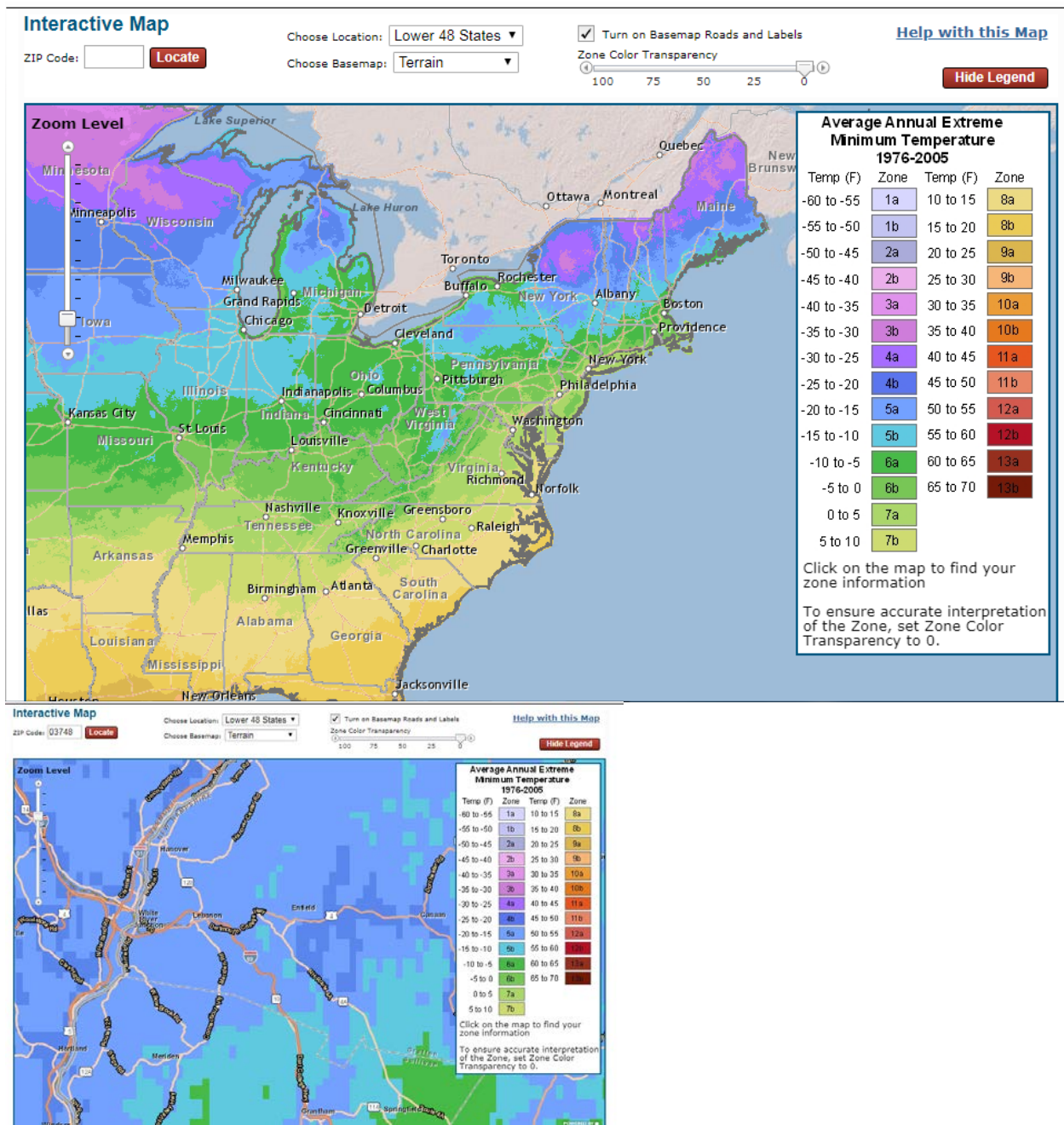
Or



Tree Planting Selection Guide: for Under/Near Overhead Utilities

2. Determine Plant Hardiness Zone:

<http://planthardiness.ars.usda.gov/phzmweb/interactivemap.aspx>



Lebanon is basically 5a. You don't want to choose a plant that has a hardiness zone greater than 5a in this example.

For Lebanon area, do not choose a plant identified as 5b, 6 or 7, unless you are willing and able to take risks in survival. There are pockets of variation in plant hardiness, but not usually deviating too far than the identified area hardiness zone.

Tree Planting Selection Guide: for Under/Near Overhead Utilities

3. Determine available growing space/ soil/possible installation location:

Are there any underground structures to avoid? Septic System? Sewer Lines? Water Lines? Ledge Rock? Stumps/Dense Root Systems of a recently removed tree? Other? Where is snow moved in the winter? Is the area used for parking? Other? What kind of soil exist? How much soil is available?

4. Choose a tree that fits the site conditions, such as:

- a. Size of planting area
- b. Form
- c. Features of Interest
- d. Air Pollution Tolerance
- e. Alkaline Soil Tolerance
- f. Drought Tolerance
- g. Poor Drainage Tolerance
- h. Salt Tolerance
- i. Shade Tolerance

Here is an online tool from Vermont where I chose small planting area and planting under wires:

<https://vtcommunityforestry.org/resources/tree-care/tree-selection>

Tree Planting Selection Guide: for Under/Near Overhead Utilities

Here is the output from the above link using criteria where “Size of Planting Area” = Small and “Features of Interest” = Fits Under Powerlines.

Scientific Name	Common Name	Cultivar
Amelanchier x grandiflora	Apple Serviceberry (white)	Autumn Brilliance
Amelanchier x grandiflora	Apple Serviceberry (white)	Autumn Sunset
Amelanchier x grandiflora	Apple Serviceberry (white)	Ballerina
Amelanchier x grandiflora	Apple Serviceberry (white)	Princess Diana
Betula nigra	River Birch	Dura Heat BNMTF (Moonshine)
Betula nigra	River Birch	Little King Fox Valley
Betula nigra	River Birch	Heritage Cully
Carpinus caroliniana	American Hornbeam/Musclewood	-
Carpinus caroliniana	American Hornbeam/Musclewood	Ball O Fire TM (J.N. Globe)
Carpinus caroliniana	American Hornbeam/Musclewood	PalisadeTM (CCSQU)
Cercis canadensis	Eastern Redbud (white)	Alba
Cornus mas	Corneliancherry Dogwood (yellow)	Golden Glory
Cornus mas	Corneliancherry Dogwood (yellow)	Redstone
Crataegus crus-galli var. inermis	Thornless Cockspur Hawthorn (white)	Cruzam Crusader TM
Crataegus phaenopyrum	Washington Hawthorn (white)	Fastigiata
Crataegus phaenopyrum	Washington Hawthorn (white)	Princeton Sentry
Crataegus phaenopyrum	Washington Hawthorn (white)	Presidential
Crataegus phaenopyrum	Washington Hawthorn (white)	Washington Lustre
Crataegus viridis	Winter King Hawthorn (white)	Winter King
Maackia amurensis	Amur Maackia (white)	-
Magnolia stellata	Star Magnolia (white)	-
Magnolia stellata	Star Magnolia (white)	Centennial
Magnolia stellata	Star Magnolia (white)	Royal Star
Prunus sargentii	Sargent Cherry (pink)	Columnaris
Prunus sargentii x P. subhirtella	Accolade Flowering Cherry (pink)	Accolade
Syringa reticulata	Japanese Tree Lilac (white)	Ivory Silk
Syringa reticulata	Japanese Tree Lilac (white)	Summer Snow